

kitchen

Dream kitchens are all in the details

Contemporary kitchen design can be quite clinical, but this stylish work/dining space is anything but

WITH its sleek mixture of glossy surfaces and ideal appliances, Denise and Clive Underdown's kitchen not only looks great, but is a highly functional workspace, which integrates seamlessly into the free-flowing interior of their new build property close to the river at Waldringfield. The couple planned to integrate the three-bedroom house into the grounds of their existing home. Designed as a lodge house for visiting family and friends, the style of the property reflects its waterside location and fulfills the need for an unfussy approach that can relax guests into an easy lifestyle.

Having tested out Anglia Factors' skills in a small kitchen/bathroom area in the wing of their main residence, when it came to designing such a key element of the new property as the kitchen, the company's name was sure to be on the short-list.

"We had other quotes to price-check against, but Anglia Factors did a great job for us the first time, and their attention to detail is first class," explains Clive. "It's the little things you don't think of which make a kitchen interesting, well-designed and a pleasure to use."

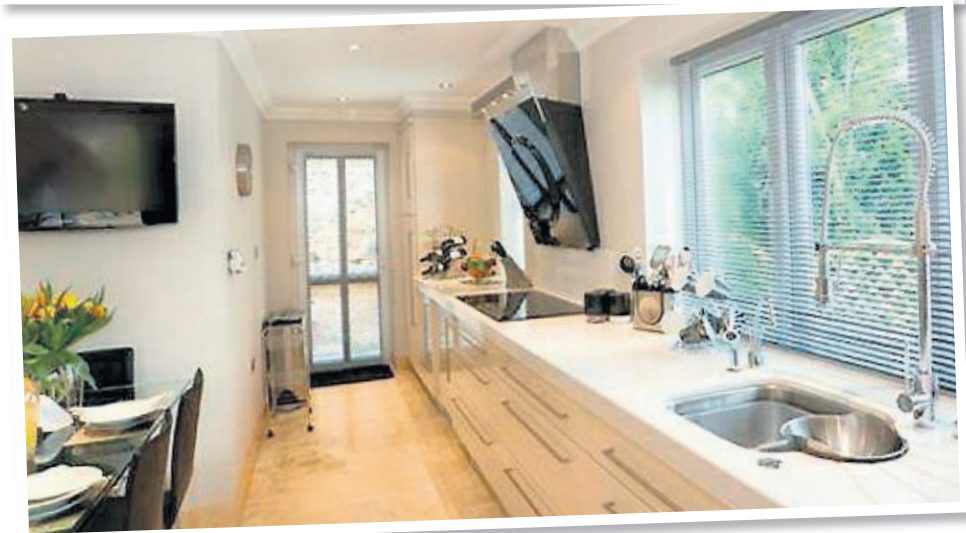
Anglia Factors' Daniel Barr was quick to spot the potential of aligning the bottom of the kitchen

windows with the top of the worksurfaces, creating maximum light and a clean line all along the exterior wall. The induction hob, state-of-the-art circular extractor fan and hidden appliances (including a washing machine and Smeg dishwasher) add to the sleek looks and in-built functionality of the room, while a wall-mounted black flatscreen echoes the ebony appliances.

The room also needs to function as an attractive space to eat, a row of floor-to-ceiling cupboards along the interior wall adds to the feeling of space and calm, toning with the light marble floor and reflecting the light in this airy room. Essentials such as the boiler and water softener are hidden away behind cupboard doors, and a built-in vacuum system is discreetly placed behind the kickboards at the foot of the cupboards.

The couple agree that the Anglia Factors had the edge not just in design but also in execution.

"Their people are just first class, and their project management and site organisation is great," says Clive. "I often say that you can't be a thousand percent better than your competitors, but you can be one percent better in a thousand different ways. Anglia Factors are like that, and it's those many details that make the difference between a good kitchen and one we really love."



STYLISH: Some examples of the kitchens that Anglia Factors can offer

THE ULTIMATE BARGAIN CLEARANCE

£10 OFF SKIP HIRE WITH THIS VOUCHER

BUILDERS WASTE HOUSEHOLD WASTE GARDEN WASTE ELECTRICAL APPLIANCES



UP TO 90% RECYCLED!

ALL SKIP SIZES AVAILABLE INCLUDING ROLL ON / ROLL OFF BINS

AT OUR TRANSFER STATION

CRUSHED BRICK RUBBLE AND HARDCORE AVAILABLE NOW!

CALL OUR TEAM FREE TO BOOK YOUR SKIP FOR THIS FORTHCOMING BANK HOLIDAY

0800 028 44 33

OFFER ENDS 6TH APRIL 2010

HEY KIDS! WHY NOT PLAY THE RECYCLE GAMES ON OUR WEBSITE www.bbs-wastemanagement.co.uk

anglia FACTORS

KITCHENS BATHROOMS BEDROOMS HOME OFFICES

Neff Cooking Demo
Sat 8th May 10-4pm
See website for details



Invest in the finesse of a designer kitchen
Quality handmade fitted interiors from Anglia Factors

Anglia Factors take care of every detail of the design and installation of the perfect custom built kitchen to meet your needs and complete your home.

come see us
Monday to Friday 9am-5pm Saturday 10am-4pm
34 Gloster Road, Martlesham Heath, Ipswich IP5 3RD

01473 610 192 www.angliafactors.co.uk
ask for advice visit us online

